

## Quick Installation Guide

### Overview

---

This quick installation guide describes the objectives; organization and basic installation of the GULFSIP **ATA-G1S** VoIP Phone Adapter ("**ATA**" in the following term).

The ATA, **ATA-G1S** integrates a web-based graphical user interface that can cover most configurations and machine status monitoring. Via standard, web browser, you can configure and check machine status from anywhere around the world.

**PREPARATION BEFORE BEGINNING ADMINISTRATION ON SIP ANALOG TELEPHONE**

<b>ADAPTER .....</b>	<b>4</b>
PHYSICAL INTERFACES .....	4
ADMINISTRATION INTERFACE .....	5
<i>Web configuration access:</i> .....	5
<i>SIP Settings Quick Configurations</i> .....	6
<i>Auto Answer Settings</i> .....	7
<i>Static IP Configuration Settings</i> .....	8
<i>Keypad configurations</i> .....	11
<b>QUICK REFERENCE IN CD-ROM GUIDE.....</b>	<b>12</b>

## Document Objectives

This guide provides physical installation, network configurations, and Internet access establishment information for the ATA Phone Adapter

## Preparation before beginning administration on SIP Analog

### Telephone Adapter

#### Physical Interfaces

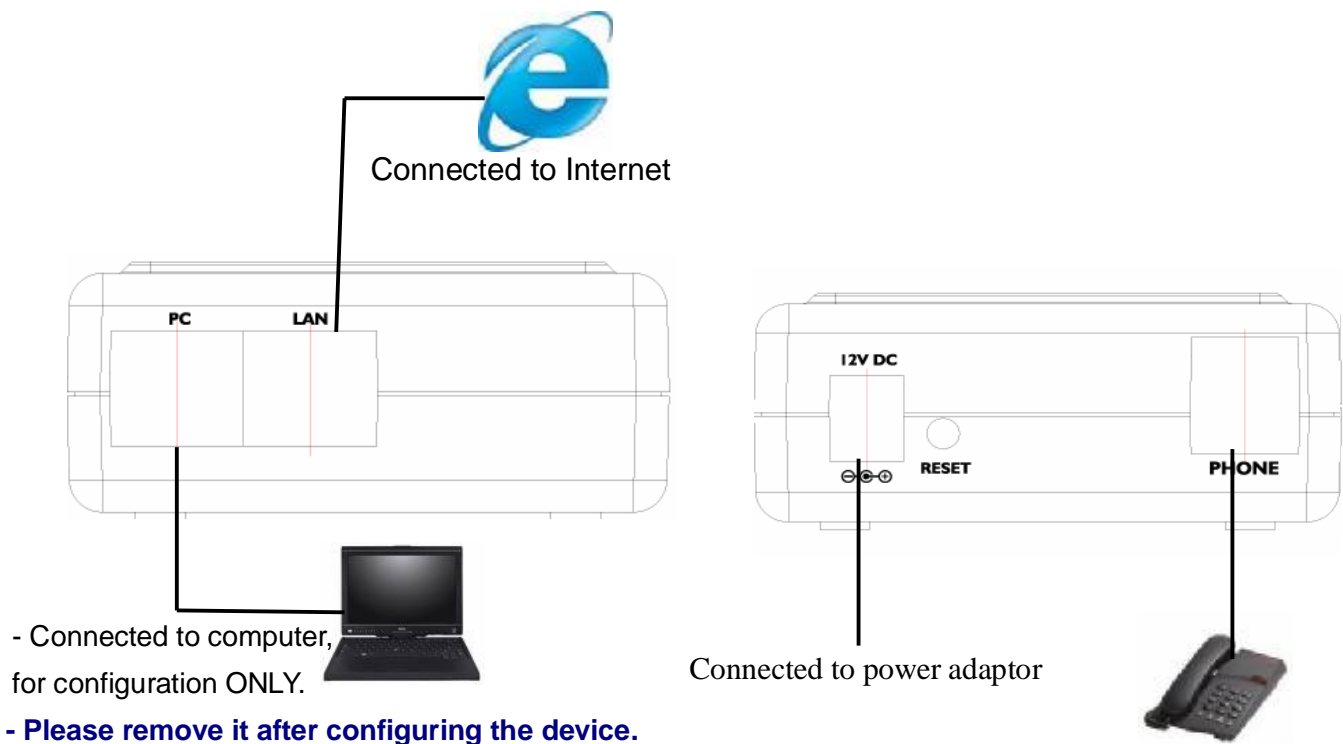


Figure (1)

1	PC	RJ-45 connector, to maintain the existing network structure, connected directly to the <b>PC</b> through <b>straight</b> CAT-5 network cable.
2	LAN	RJ-45 connector, for Internet access, connected directly to the Internet Connection (DSL ...) through <b>straight</b> CAT-5 network cable.
3	12V DC	12V DC Power input outlet

#### ë Note

Use only the bundled AC adapter for the ATA, other the device may damage.

## Administration Interface

The ATA provides GUI (Web based, Graphical User Interface) for machine management and administration. Key pad administration also available for simple configuration.

### Web configuration access:

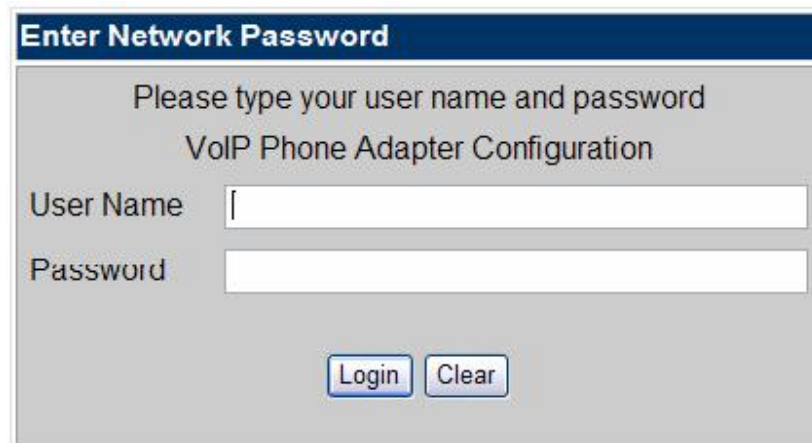
To start ATA web configuration, you must have one of these web browsers installed on computer for management.

- Netscape Communicator 4.03 or higher
- Microsoft Internet Explorer 4.01 or higher with Java support

- Connect a network Cable between your PC and the PC port in our device, as shown in the Figure above.

- Default IP address of **ATA-G1S** is **192.168.123.1** you may now open your web browser, and insert **<http://192.168.123.1>** in the address bar of your web browser to logon **ATA-G1S** web configuration page.

**ATA-G1S** will prompt for logon **username/password**, please enter: **admin / gulfsip** to continue machine administration.



**Enter Network Password**

Please type your user name and password  
VoIP Phone Adapter Configuration

User Name

Password

Figure (2)

## SIP Settings quick configurations

**Note: This Device is configured with a GULFSIP Number by Default, so please make this configuration only after confirming with the GULFSIP Technical Support Team.**

Execute your web browser, and insert the IP address (default: **192.168.123.1**) of **ATA-G1S** in the address bar. After logging on machine with username/password (default: **admin/gulfsip**), browse to **"Sip Settings"** --> **"Service Domain"** configuration menu:

After confirming the modification you've done, Please click on the **Submit** button to apply settings and browse to **"Save & Reboot"** menu to reboot the machine to make the settings effective.

The screenshot shows the 'Service Domain Settings' page. On the left is a 'VoIP Phone Adapter Configuration Menu' with options: Phone Book, Phone Setting, Network, SIP Settings, NAT Trans., Advanced Settings, System Auth., Save & Reboot, System Settings, and Reboot without Saving. The 'SIP Settings' menu item is highlighted. The main content area is titled 'Service Domain Settings' and contains a message: 'You could set information of service domains in this page.' Below this is a 'Realm No.' dropdown set to 'Realm # 1'. A table with the title 'Realm' contains the following fields:

Realm	
Active:	<input checked="" type="radio"/> On <input type="radio"/> Off
Display Name:	Put your GULFSIP Number
User Name:	Put your GULFSIP Number
Register Name:	Put your GULFSIP Number
Register Password:	Put your GULFSIP Password
Domain Server:	sip.gulfsip.com
Proxy Server:	sip.gulfsip.com
Outbound Proxy:	
Status:	Registered

At the bottom right are 'Submit' and 'Reset' buttons. A large arrow points from the 'Save & Reboot' option in the left menu to the 'Submit' button. Numbered annotations (1-6) point to specific elements: 1 points to the 'Display Name' field, 2 to the 'User Name' field, 3 to the 'Register Name' field, 4 to the 'Register Password' field, 5 to the 'Submit' button, and 6 to the 'Save & Reboot' menu item.

Figure (3)

### Static IP configuration Settings:

In case you found that your Internet connection (DSL Router, cable,...) does not provide your device **ATA-G1S** an IP address from it's DHCP server (**automatic IP address**), so you need to set a static IP on the LAN port of the device which is connected to the internet connection.

#### **How to insure that your internet router does not provide an IP address?**

- Connect a network cable between the LAN port and the Internet router LAN Port.
- Please pick up the handset of the phone which connected to our device in the phone port, and dial #126#, if you hear an IP address from the same range which your internet router provide, for example **192.168.x.x**, so your Router working on DHCP Server mode.  
But if you hear **0.0.0.0**, or **169.254.x.x**, so your internet router does not provide IP address, and you need to set a static IP manually.

#### **To set a Static IP, please do the following Steps:**

- Connect a network Cable between your PC and the PC port in our device **ATA-G1S**, as shown in the Figure above.

You must be sure that your PC is working on the DHCP Client mode, to ensure that please do the following steps:

**"Start " => "Control Panel" => "Network Connections"**

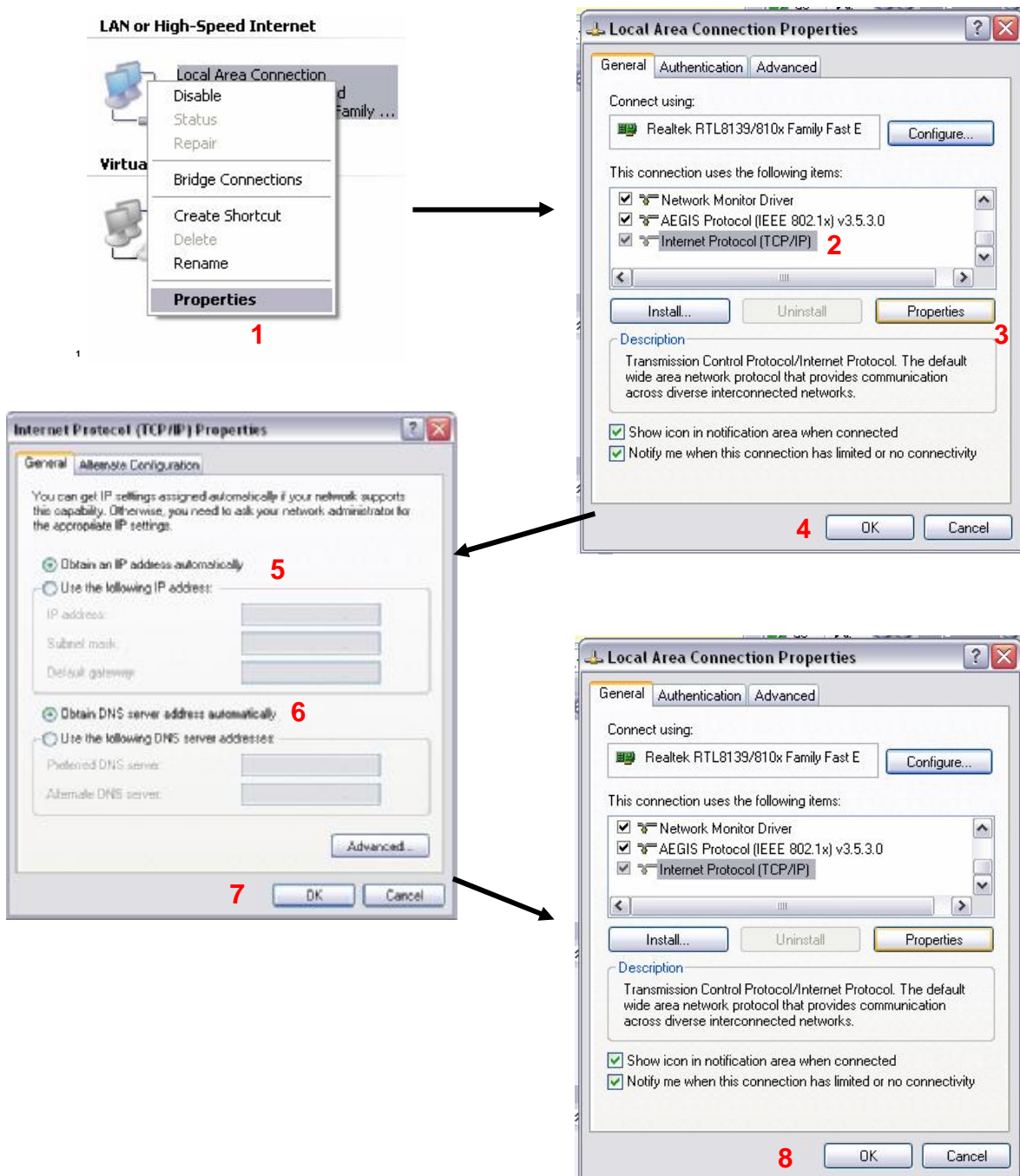


Figure (4)

Execute your web browser, and insert the IP address (default: **192.168.123.1**) of **ATA-G1S** in the address bar. After logging on machine with username/password (default: **admin/gulfsip**), browse to "**Network**" --> "**LAN Settings**" configuration menu:



## VoIP Phone Adapter Configuration Menu

Phone Book

Phone Setting

Network

SIP Settings

NAT Trans.

Advanced Settings

System Auth.

Save & Reboot

System Settings

Reboot without Saving

## LAN Settings

You could configure the LAN settings in this page.

LAN Mode: ☐ Bridge ☒ NAT

### LAN Setting

IP Type:	<input checked="" type="radio"/> Fixed IP <input type="radio"/> DHCP Client <input type="radio"/> PPPoE	1
IP:	IP address	2
Mask:	Subnet Mask	3
Gateway:	Default Gateway	4
DNS Type:	<input checked="" type="radio"/> Fixed <input type="radio"/> Auto	5
DNS Server1:	DNS Server address	6
DNS Server2:	0.0.0.0	
MAC:	00304f65a678	
Host Name:	VOIP_TA1S10	

### PPPoE Setting

User Name:	
Password:	
Service Name:	

7

8

Figure (5)

## Save Change to Flash Memory

Most of the VoIP Phone Adapter parameters will take effective after you modify, but it is just temporary stored on RAM only, it will disappear after your reboot or power off the VoIP Phone Adapter, to save the parameters into Flash ROM and let it take effective forever, please remember to press the **Save & Reboot** button after you modify the parameters.

## Keypad configurations

The **ATA-G1S** phone adapter support telephone keypad configurations, please connect analog telephone set and refer to the following table for machine network configurations.

### ! Note:

Pick up the handset and press **#190#** then hang up *before* you do following Settings:

IVR Menu Choice	Machine operation	Parameter(s)	Notes:
<b>#111#</b>	Set DHCP client	None	<b>ATA-G1S</b> will change to DHCP Client.
<b>#112xxx*xxx*xxx*xxx#</b>	Setup Static IP Address	Use the * (star) key when entering a decimal point.	DHCP will be disabled and system will change to the Static IP type.
<b>#113xxx*xxx*xxx*xxx#</b>	Set Network Mask	Use the * (star) key when entering a decimal point.	Must set Static IP first.
<b>#114xxx*xxx*xxx*xxx#</b>	Set Gateway IP Address	Use the * (star) key when entering a decimal point.	Must set Static IP first.
<b>#115xxx*xxx*xxx*xxx#</b>	Set Primary DNS Server	Use the * (star) key when entering a decimal point.	Must set Static IP first.
<b>#127 + [port number] #</b>	Set a SIP Port	None	To change the SIP Port.
<b>#116#</b>	Enable the VPN client	None	To enable the VPN client configuration.
<b>#117#</b>	Disable the VPN client	None	To disable the VPN client configuration.
<b>#134 + [numberof rings] #</b>	Set the number of rings before the Line port open.		To set the number of rings for Auto Answer.

Following keypad commands can be used to display the network settings enabled on **ATA-G1S** via voice prompt.

**! Note:**

These commands **do not require #190#**, so you can make it directly:

IVR Menu Choice	Machine operation	Notes:
<b>#126#</b>	Check IP Address of the LAN Port	IVR will announce the current IP address of the <b>ATA-G1S</b> LAN port.
<b>#121#</b>	Check network connection Type	IVR will announce if DHCP is enabled or disabled.
<b>#122#</b>	Check the Phone Number	IVR will announce current enabled GULFSIP number.
<b>#123#</b>	Check Network Mask	IVR will announce the current network mask of the <b>ATA-G1S</b> LAN port.
<b>#124#</b>	Check Gateway IP Address	IVR will announce the current gateway IP address of the <b>ATA-G1S</b> LAN port.
<b>#125#</b>	Check Primary DNS Server Setting	IVR will announce the current setting in the Primary DNS field.

## Quick reference in CD-ROM guide

This guide is used to help you startup your VoIP router settings. It is also recommended to check the user manual CD-ROM for more details like the “Web Setup”, and how to set the device back to default value.

## Technical Support Contacts

Email: [support@gulfsip.com](mailto:support@gulfsip.com)

GULFSIP Support Number: 888

